

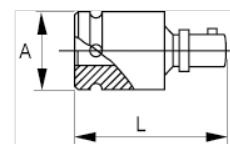


**169-25-1**  
**1/2" Impact Universal Joints**



**PRODUCT DETAILS**

- 1/2" impact extension
- High performance Cr-Mo alloy steel
- Phosphate finish
- To be used with machines
- To be used with retaining ring
- Standards: UNE 16507, DIN 3129, ISO 2725



PRODUCT ATTRIBUTES

Product	<b>A</b>	<b>L</b>	
<b>169-25-1</b>	30 mm	63 mm	189 g