

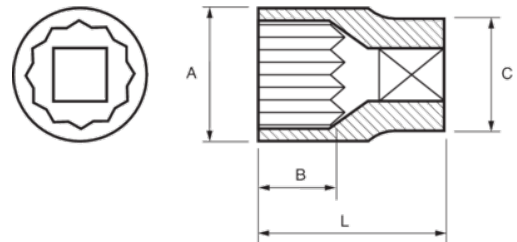


122-08-1/122-36-1
1/2" Sockets Bi-Hex Metric





PRODUCT DETAILS

- 1/2" sockets, bi-hex, metric sizes
- Chrome vanadium alloy steel
- Chrome plated bright finish
- Wave shape profile NPP
- Standards: DIN 3120, DIN 3124



PRODUCT ATTRIBUTES

Product		A	B	C	L	
122-08-1	8 mm	14.8 mm	13 mm	22 mm	38 mm	50 g
122-09-1	9 mm	15.3 mm	13 mm	22 mm	38 mm	48 g
122-10-1	10 mm	15.3 mm	13 mm	22 mm	38 mm	49 g
122-11-1	11 mm	16.5 mm	13 mm	22 mm	38 mm	50 g
122-12-1	12 mm	17.8 mm	13 mm	22 mm	38 mm	52 g
122-13-1	13 mm	19 mm	13 mm	22 mm	38 mm	54 g
122-14-1	14 mm	20.3 mm	13 mm	22 mm	38 mm	56 g
122-15-1	15 mm	22 mm	17.8 mm	20.5 mm	38 mm	57 g
122-16-1	16 mm	22 mm	17.8 mm	20.5 mm	38 mm	71 g
122-17-1	17 mm	24 mm	17.8 mm	21.9 mm	38 mm	72 g
122-18-1	18 mm	25 mm	17.8 mm	22.9 mm	38 mm	90 g
122-19-1	19 mm	26 mm	17.8 mm	22.9 mm	38 mm	84 g
122-20-1	20 mm	28 mm	17.8 mm	23.9 mm	38 mm	87 g
122-21-1	21 mm	28 mm	17.8 mm	23.9 mm	38 mm	95 g
122-22-1	22 mm	30 mm	17.8 mm	26.1 mm	38 mm	97 g
122-23-1	23 mm	32 mm	17.8 mm	28.1 mm	38 mm	103 g
122-24-1	24 mm	32 mm	17.8 mm	28.1 mm	38 mm	109 g
122-27-1	27 mm	36 mm	17.8 mm	30.1 mm	42 mm	211 g
122-30-1	30 mm	40 mm	17.8 mm	34.1 mm	44 mm	214 g
122-32-1	32 mm	42 mm	17.8 mm	36.1 mm	44 mm	217 g
122-34-1	34 mm	44 mm	17.8 mm	37.1 mm	45 mm	220 g
122-36-1	36 mm	44 mm	17.8 mm	38.1 mm	44 mm	220 g