



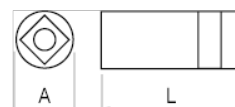
105-48-1

Chiave a bussola portainseriti, attacco quadro 1/4", con profilo esagonale da 1/4"







DETTAGLI PRODOTTO

- Portainseriti per inserti 1/4"
- Da attacco quadro femmina 1/4" ad attacco femmina esagonale 1/4"
- Finitura: lucida
- Acciaio legato ad alte prestazioni
- Norme: ISO 1174, DIN3120



ATTRIBUTI PRODOTTO

Prodotto				A	L	
105-48-1	1	1/4 in	1/4 in	11.9 mm	25 mm	12 g