



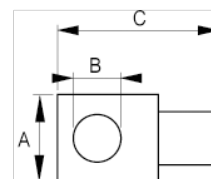
125-43-1

Testa per barra a T scorrevole 1/2"





DETTAGLI PRODOTTO

- Barra a T scorrevole 1/2"
- Finitura lucida
- Acciaio al cromo-vanadio ad alte prestazioni
- Conforme alle norme: ISO 3315/1174, DIN 3122/3123/3120 e UNE 16512



ATTRIBUTI PRODOTTO

Prodotto		A	B	C	
125-43-1	1/2	24 mm	13.5 mm	44 mm	73 g