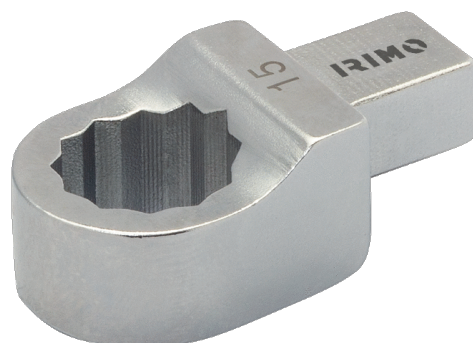




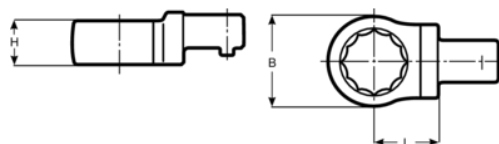
7309-2-14

Inserto ad anello per chiave
dinamometrica 9x12, 14 mm





DETTAGLI PRODOTTO

- Testa intercambiabile per inserto ad anello, 9x12mm
- Acciaio legato ad alte prestazioni
- Al cromo forgiato



ATTRIBUTI PRODOTTO

Prodotto		L	H	B	
7309-2-14	14 mm	17.5 mm	12 mm	23 mm	50 g