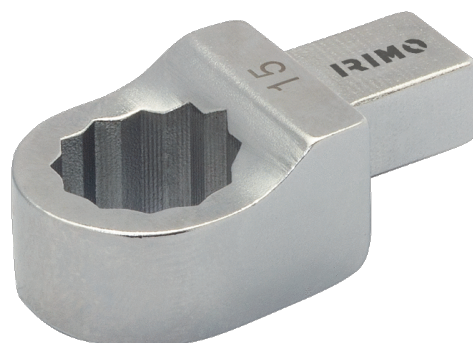




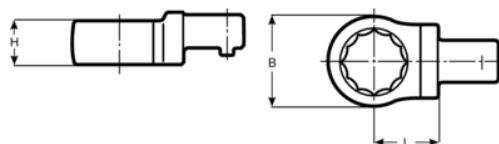
**7314-2-13**

**Inserto ad anello per chiave  
dinamometrica 14x18, 13 mm**





## DETTAGLI PRODOTTO

- Testa intercambiabile per inserto ad anello, 14x18 mm
- Acciaio legato ad alte prestazioni
- Al cromo forgiato



## ATTRIBUTI PRODOTTO

Prodotto		<b>H</b>	<b>B</b>	<b>L</b>	
<b>7314-2-13</b>	13 mm	12 mm	21 mm	25 mm	120 g