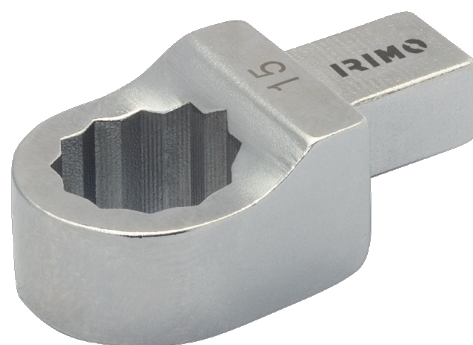




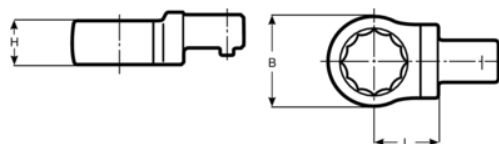
7314-2-24

Inserto ad anello per chiave  
dinamometrica 14x18, 24 mm





#### DETTAGLI PRODOTTO

- Testa intercambiabile per inserto ad anello, 14x18 mm
- Acciaio legato ad alte prestazioni
- Al cromo forgiato



## ATTRIBUTI PRODOTTO

Prodotto		<b>H</b>	<b>B</b>	<b>L</b>	
<b>7314-2-24</b>	24 mm	15 mm	38 mm	25 mm	145 g