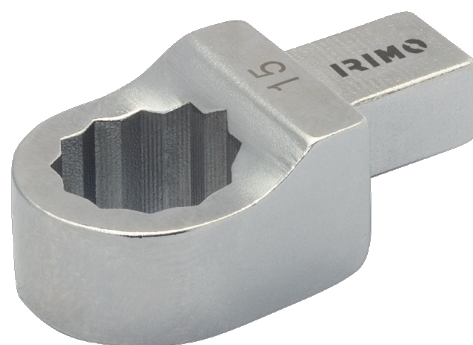




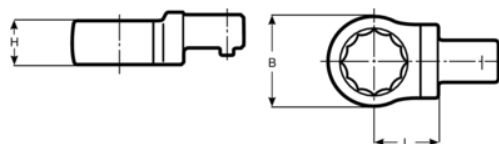
7314-2-30

Inserto ad anello per chiave
dinamometrica 14x18, 30 mm





DETTAGLI PRODOTTO

- Testa intercambiabile per inserto ad anello, 14x18 mm
- Acciaio legato ad alte prestazioni
- Al cromo forgiato



ATTRIBUTI PRODOTTO

Prodotto		H	B	L	
7314-2-30	30 mm	18 mm	45 mm	31 mm	180 g