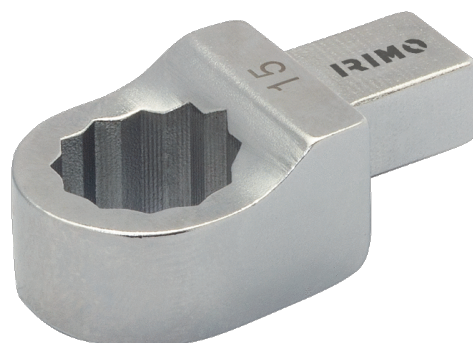




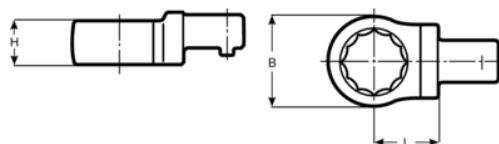
7314-2-41

**Inserto ad anello per chiave
dinamometrica 14x18, 41 mm**





DETTAGLI PRODOTTO

- Testa intercambiabile per inserto ad anello, 14x18 mm
- Acciaio legato ad alte prestazioni
- Al cromo forgiato



ATTRIBUTI PRODOTTO

Prodotto		H	B	L	
7314-2-41	41 mm	19 mm	59 mm	31 mm	235 g