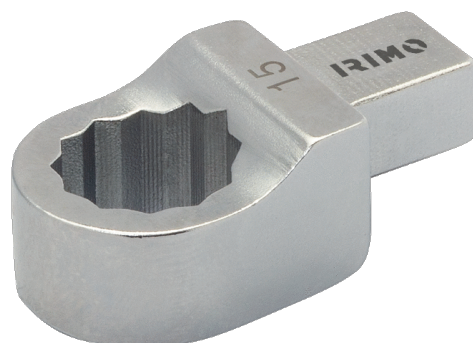




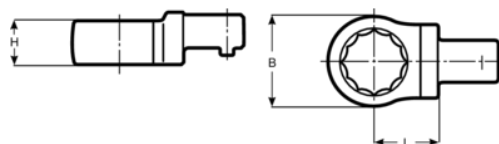
7314-2-13/7314-2-41

Inserto ad anello aperto per chiave  
dinamometrica 14x18





## DETTAGLI PRODOTTO

- Testa intercambiabile per inserto ad anello, 14x18 mm
- Acciaio legato ad alte prestazioni
- Al cromo forgiato



## ATTRIBUTI PRODOTTO

Prodotto		<b>H</b>	<b>B</b>	<b>L</b>	
<b>7314-2-13</b>	13 mm	12 mm	21 mm	25 mm	120 g
<b>7314-2-14</b>	14 mm	12 mm	23 mm	25 mm	120 g
<b>7314-2-17</b>	17 mm	13 mm	28 mm	25 mm	130 g
<b>7314-2-19</b>	19 mm	13 mm	30 mm	25 mm	140 g
<b>7314-2-22</b>	22 mm	15 mm	35 mm	25 mm	145 g
<b>7314-2-24</b>	24 mm	15 mm	38 mm	25 mm	145 g
<b>7314-2-27</b>	27 mm	18 mm	42 mm	31 mm	170 g
<b>7314-2-30</b>	30 mm	18 mm	45 mm	31 mm	180 g
<b>7314-2-32</b>	32 mm	18 mm	48 mm	31 mm	180 g
<b>7314-2-36</b>	36 mm	19 mm	53 mm	31 mm	205 g
<b>7314-2-41</b>	41 mm	19 mm	59 mm	31 mm	235 g