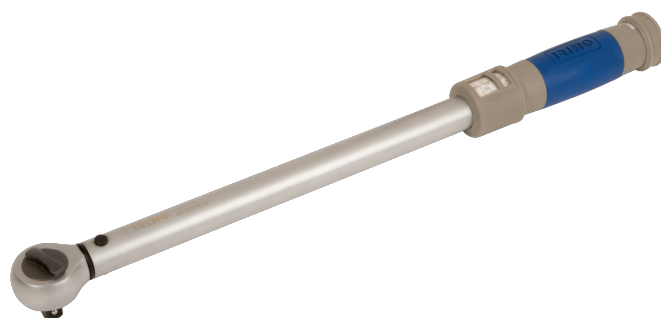




070471


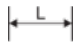



Llave torque de disparo ajustable de 3/4" con cabeza fija de matraca, 160-800 Nm



DETALLES DEL PRODUCTO

- Precisión: $\pm 4\%$ en sentido horario.
- Cabeza fija de Matraca.
- Matraca reversible con 45 dientes / ángulo de acción de 8° .
- Mango de plástico para mayor comodidad.
- Norma: ISO 6789:2003.

ATRIBUTOS DE PRODUCTO

Producto					
070471	3/4"	1040 mm	160-800 N·m	2 N·m	4.9 kg