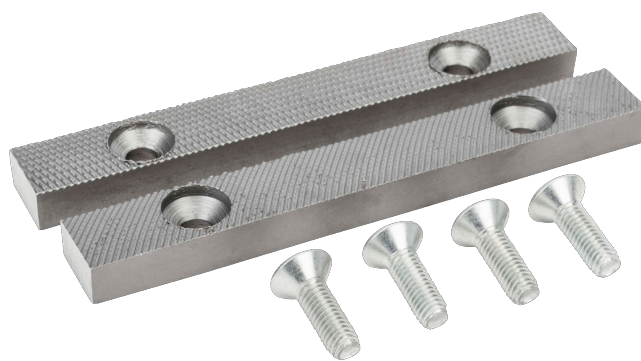




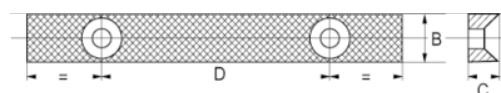
202451

Par de mandíbulas com parafusos
para torno de bancada
207061,216061

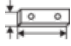



DETALHES DO PRODUTO

- Par de mandíbulas e parafusos sobresselentes para tornos de bancada quadrados 207041/207071 e 216



ATRIBUTOS DO PRODUTO

Produto		B	C	D	
202451	150 mm	20 mm	12 mm	90 mm	750 g