



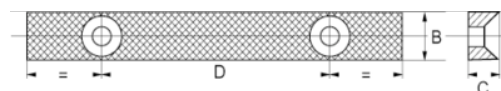
202461

Par de mandíbulas com parafusos
para torno de bancada
207071,216071

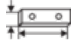



DETALHES DO PRODUTO

- Par de mandíbulas e parafusos sobresselentes para tornos de bancada quadrados 207041/207071 e 216



ATRIBUTOS DO PRODUTO

Produto		B	C	D	
202461	175 mm	25 mm	14 mm	105 mm	1020 g