



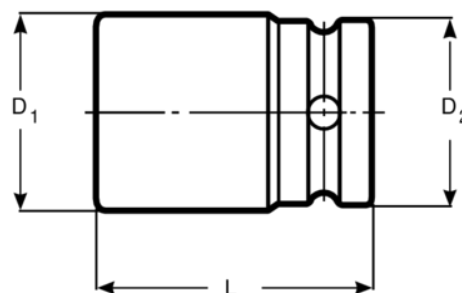
**T4902**

**Adaptador 3/8" para pontas de 10 mm**







## DETALHES DO PRODUTO

- Adaptador de chaves quadradas 3/8" para pontas de 10 mm
- Acabamento polido de alta qualidade
- Liga de aço de alto desempenho
- Normas: ISO 1174, DIN 3120



## ATRIBUTOS DO PRODUTO

| Produto      |  |  |  | <b>D1</b> | <b>D2</b> | <b>L</b> |  |
|--------------|---|---|---|-----------|-----------|----------|---|
| <b>T4902</b> | 1   | 10 mm   | 3/8 in  | 15 mm     | 10 mm     | 35 mm    | 32 g  |