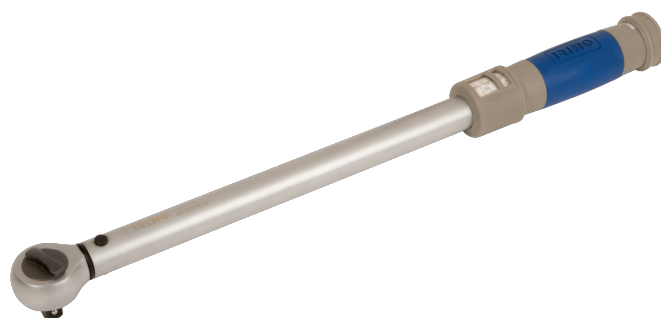




070441


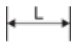



Chave dinamométrica de clique ajustável 1/2" com cabeça de roquete fixa 40-200 Nm



DETALHES DO PRODUTO

- Precisão: $\pm 4\%$ no sentido horário
- Cabeça de roquete fixo
- Roquete reversível com 45 dentes/ 8° de ação angular
- Pega de plástico para maior conforto
- standard: ISO6789:2003

ATRIBUTOS DO PRODUTO

Produto					
070441	1/2"	460 mm	40-200 N·m	0.5 N·m	1.0 kg