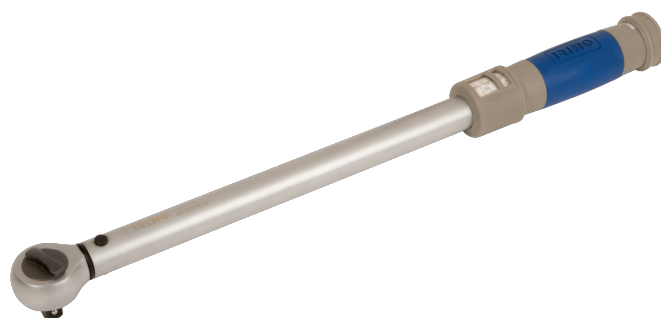




070451


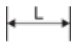



Chave dinamométrica de clique ajustável 1/2" com cabeça de roquete fixa 65-335 Nm



## DETALHES DO PRODUTO

- Precisão:  $\pm 4\%$  no sentido horário
- Cabeça de roquete fixo
- Roquete reversível com 45 dentes/ $8^\circ$  de ação angular
- Pega de plástico para maior conforto
- standard: ISO6789:2003

## ATRIBUTOS DO PRODUTO

Produto					
070451	1/2"	520 mm	65-335 N·m	0.5 N·m	1.2 kg