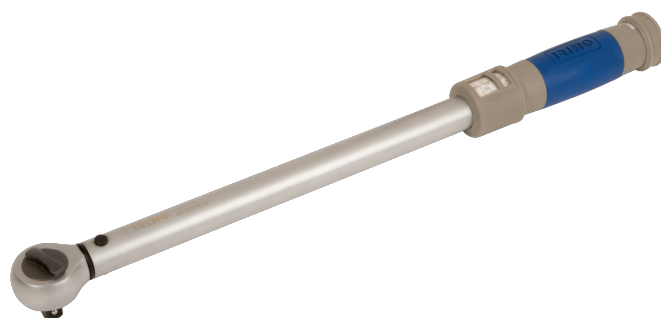




070461


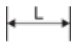



Chave dinamométrica de clique ajustável 3/4" com cabeça de roquete fixa 65-335 Nm



DETALHES DO PRODUTO

- Precisão: $\pm 4\%$ no sentido horário
- Cabeça de roquete fixo
- Roquete reversível com 45 dentes/ 8° de ação angular
- Pega de plástico para maior conforto
- standard: ISO6789:2003

ATRIBUTOS DO PRODUTO

Produto					
070461	3/4"	520 mm	65-335 N·m	0.5 N·m	1.2 kg