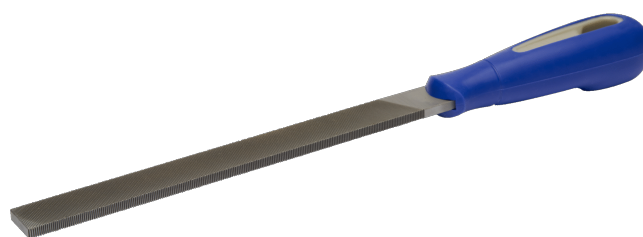




534561

Ansatsfil 6" grov, parallella ytor

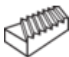
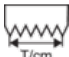




PRODUKTINFORMATION

- Flatfil för arbete i höglegerade stål
- Parallella ytor
- Bekvämt tvåkomponentshandtag
- Dubbelgrad, en kant utan grad och en kant enkelgrad
- Huggning: 1=grov, 2=medium



PRODUKTATTRIBUT

Produkt	A	B	C				
534561	150 mm	16 mm	4 mm	1	12	30	110 g